

LET'S OBSERVE **BEES & FLOWERS**

IN OUR SCHOOL ORCHARD!



1. Slowly and patiently walk around the trees in your school orchard and look for flowers, or blooms, on the trees.

Are there a lot of flowers on the trees, just a few, a medium amount?

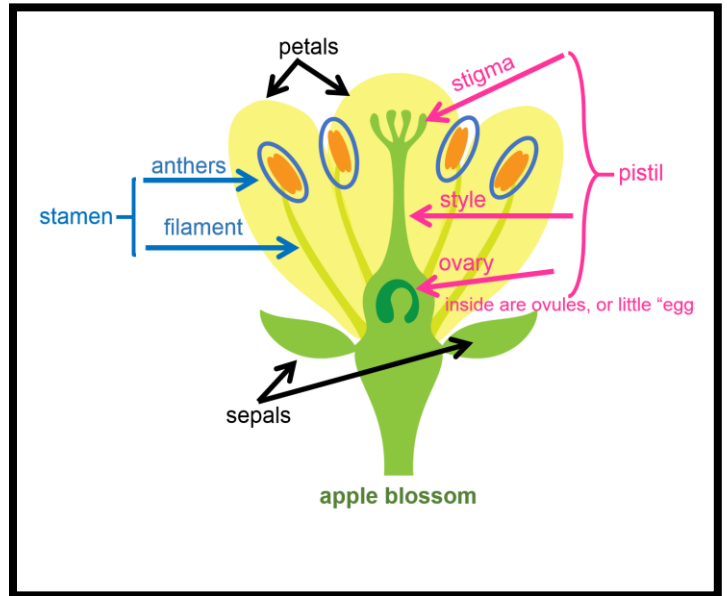
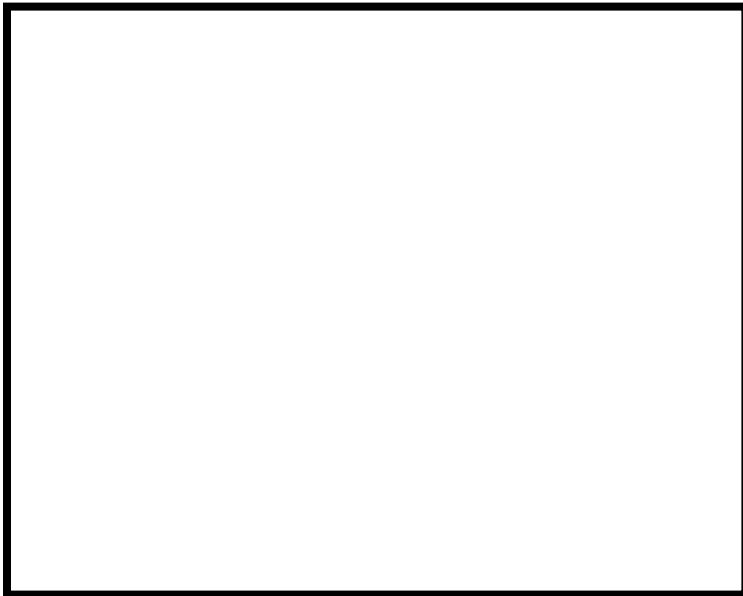
What do the flowers look like? Describe the color and shape.

Draw a flower you see (in the empty box below) and label the parts of the flower.

Just do the best you can!



See diagram below for help.



2. Slowly and patiently walk around the trees in your school orchard and look for the following signs of pollination.

Do you see any pollinators flying around, or visiting flowers? Yes or No (circle one)

If you do see pollinators, which ones do you see? Bees? Butterflies? Little tiny flies? "Bugs" you don't know?

A few, lots, none? Describe what you see.

3. How do the pollinators behave (or “act”) when they are visiting flowers? What are they doing with their bodies?

4. How long do the pollinators spend at each flower? Count the number of seconds a pollinator stays at a flower, and do this for at least three flowers (if possible).

Flower 1: _____seconds

Flower 4: _____seconds

Flower 2: _____seconds

Flower 5: _____seconds

Flower 3: _____seconds

Flower 6: _____seconds

5. Why do you think there might be differences in how long a pollinator spends on a flower? For example, did you see a difference in #4 above?

6. Why do you think there might be differences in how long a bee spends on a flower versus a butterfly, or a hummingbird?

Bonus: record any additional observations below.
